

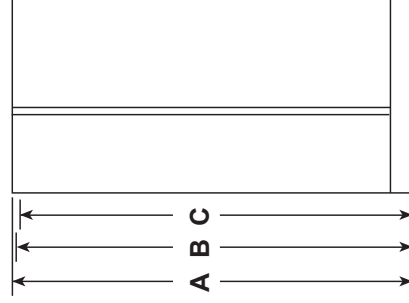
# PZS22MMK/MSK

GE Profile™ Series 22.1 Cu. Ft. Counter-Depth Side-by-Side Refrigerator

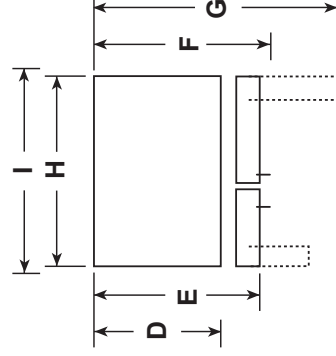
## DIMENSIONS AND INSTALLATION INFORMATION (IN INCHES)

OVERALL DIMENSIONS	Height to top of door (in.) <b>A</b>	69-7/8
	Height to top of hinge (in.) <b>B</b>	69-1/4
	Height to top of case (in.) <b>C</b>	69
	Case depth without door (in.) <b>D</b>	24-1/8
	Case depth less door handle (in.) <b>E</b>	28-1/2
	Case depth with door handle (in.) <b>F</b>	30-3/4
	Depth with fresh food door open 90° (in.) <b>G</b>	46-1/4
	Width (in.) <b>H</b>	35-3/4
	Width with door open 90° inc. door handle (in.) <b>I</b>	43-1/4
	Each side (in.)	1/8
Top (in.)	1	
Back (in.)	2	

FRONT VIEW



TOP VIEW



For answers to your Monogram, GE Café™ Series, GE Profile™ Series or GE Appliances product questions, visit our website at [geappliances.com](http://geappliances.com) or call GE Answer Center® Service, 800.626.2000.



Specification Revised 4/16

# PZS22MMK/MSK

## GE Profile™ Series 22.1 Cu. Ft. Counter-Depth Side-by-Side Refrigerator

### DIMENSIONS AND INSTALLATION INFORMATION (IN INCHES)

#### INSTALLATION TIPS TO MAXIMIZE THE BUILT-IN LOOK

- All wall/floor molding should be removed prior to installation.
- Water recess on rear wall recommended to prevent water line damage. 48" minimum length, 1/4" diameter water line tubing recommended.
- When possible, recess both copper water line and electrical outlet. (See local codes)
- Front and rear leveling legs are adjustable for the built-in look. (See owner's manual)

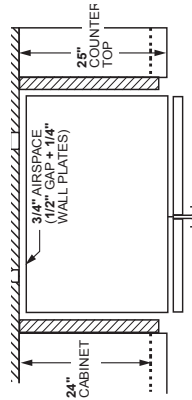
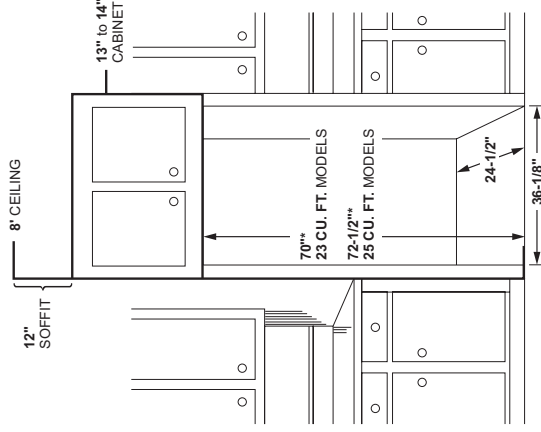


Fig 2A ept



\*The rough-in dimensions of 70" for 23 cu. ft. models and 72-1/2" for 25 cu. ft. models are minimum and measured from the finished floor to top of opening (for the underside of the overhead cabinets). For Models with Trim Kit: If frameless style cabinets are planned for above the refrigerator, you may need to consider adding a maximum of 1/4" (70-1/4") to height of opening for 23 cu. ft. models and 1/8" (72-5/8") for 25 cu. ft. models to allow for additional clearance between the cabinet doors and the top of refrigerator trim when the cabinet doors are in open position.



For answers to your Monogram, GE Café™ Series, GE Profile™ Series or GE Appliances product questions, visit our website at [geappliances.com](http://geappliances.com) or call GE Answer Center® Service, 800.626.2000.



Listed by  
Underwriters  
Laboratories



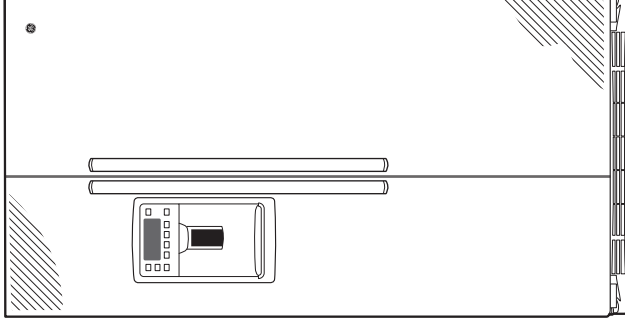
Specification Revised 4/16

## **PZS22MMK/MSK**

### *GE Profile™ Series 22.1 Cu. Ft. Counter-Depth Side-by-Side Refrigerator*

#### **FEATURES AND BENEFITS**

- Counter-depth design – Offers a built-in look by fitting nearly flush with surrounding cabinetry
  - LED Lighting – Illuminates the fresh food compartment, vegetable drawer and climate-controlled drawers to spotlight food without compromising space
  - Quick Ice setting – Creates ice up to 50% faster than normal settings
  - Turbo Cool setting – Restores proper temperature to the refrigerator after frequent door openings
  - Quick Space shelf – Quickly slides out of the way to make room for tall items
  - Advanced water filtration uses MWF replacement filter – Reduces trace pharmaceuticals from water and ice\* (\* Removes 98% of ibuprofen, atenolol, fluoxetine, progesterone and trimethoprim. These pharmaceuticals are not necessarily in all users' water)
  - Adjustable slide-out, spillproof glass shelves – Raised edges help contain spills and make cleanup quick and easy
  - Adjustable Clear Look door bins – Offer ideal space for large containers in the door and free up valuable shelf space
  - Adjustable-humidity drawers – Controls help food stay fresh
  - Glass freezer shelves – Enjoy a high-end appearance with secure storage for a variety of items
- Model PZS22MMKES – Slate  
Model PZS22MSKSS – Stainless Steel



**UFAS**  
COMPLIANT

